

DOCUMENT 00 90 00
ADDENDUM

ADDENDUM NO. [2] Date: February 8, 2023

RE: Cass Street Assisted Living Canopy & Parking
Bethany Lutheran Homes, Inc.
dba Eagle Crest Communities
HSR Project 22081

FROM: HSR Associates, Inc
100 Milwaukee Street
La Crosse, WI 54603
(608) 784-1830

To: Prospective Bidders

This addendum forms a part of the Contract Documents and modifies the original Bidding Documents dated January 2023. Acknowledge receipt of this Addendum in the space provided on the bid form. Failure to do so may subject the Bidder to disqualification.

This Addendum consists of [1] page, and [2] drawings.

CHANGES TO DRAWINGS

1. Sheet A300 CANOPY SECTIONS 30"x42"
 - a. See the revised sheet included in this addendum. Disregard the previous version.
 - b. See revisions showing locations of paint and sealed weathering steel.
2. Sheet C100 SITE PLAN 30"x42"
 - a. See the revised sheet included in this addendum. Disregard the previous version.
 - b. Add parking stops.
3. Sheet C400 UTILITY PLAN 30"x42"
 - a. See the narrative, immediately below, describing revisions to the sheet.
 - b. Remove, "I.E.(8")=664.70" at connection to storm manhole and replace with, "I.E.(6")=664.70".
4. Sheet S001 STRUCTURAL NOTES 30"x42"
 - c. See the narrative, immediately below, describing revisions to the sheet.
 - a. In Steel Notes item #1 add specification ASTM A588 to both "Angles, Plates, and Channels" and "Square and Rectangular HSS".

PRIOR APPROVALS

5. Section 08 71 00 Finish Hardware
 - a. The following products were approved as part of a substitution request
 - i. Dorma ED900 for Stanley D-4990
 - ii. Larco J01J4 Jamb Switch for LCN 8310-3818 TWS Actuator
 - iii. Larco 4R1R4 for LCN 8310-3856 WS Actuator
 - iv. Larco 233804 for LCN 8310-865 Receiver

END OF DOCUMENT 00 90 00

Page Intentionally Left Blank



HSR ASSOCIATES INC.
100 MILWAUKEE STREET
LA CROSSE, WISCONSIN
PHONE: 608.784.1830
FAX: 608.782.5844
www.hsrassociates.com

Consultant:

EAGLE CREST COMMUNITIES
CASS STREET ASSISTED LIVING CANOPY & PARKING

Project Location: 1315 CASS STREET
LA CROSSE, WI 54601

Sheet Title: CANOPY SECTIONS

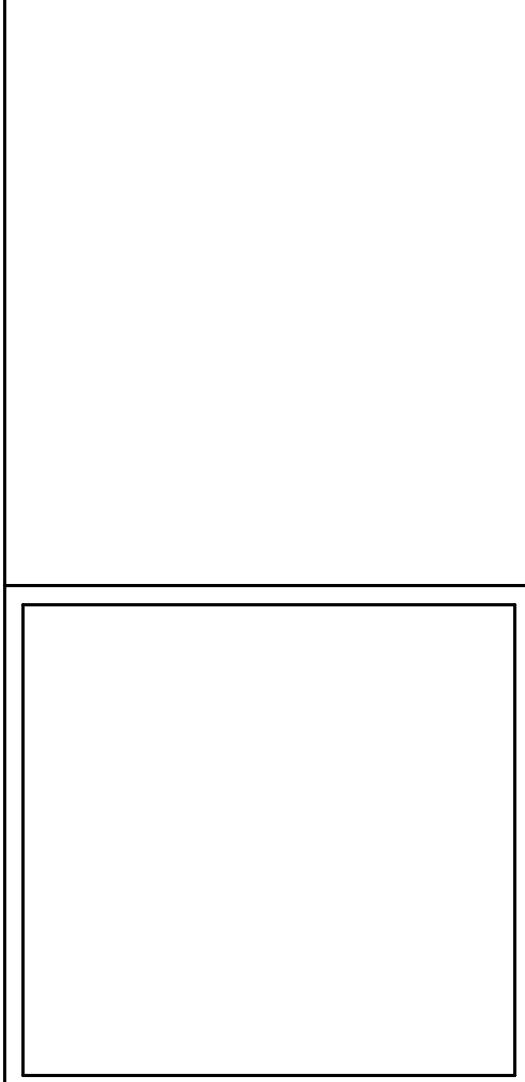
Project Title:

HSR Project Number: 22081

Project Date: JANUARY 27, 2023

Drawn By: RMW

Key Plan:

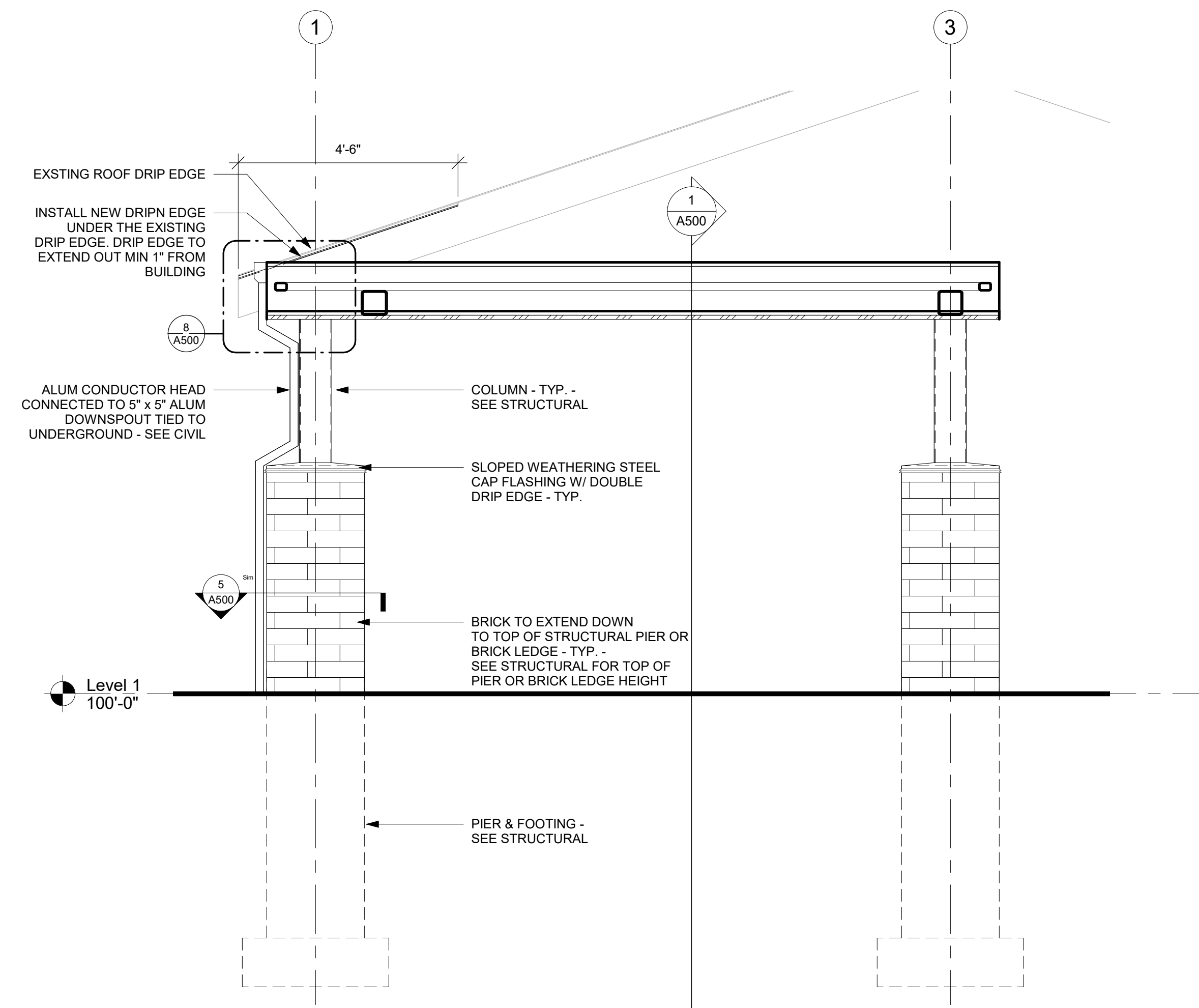


No.	Description	Date
A02	ADDENDUM #2	02-08-2023

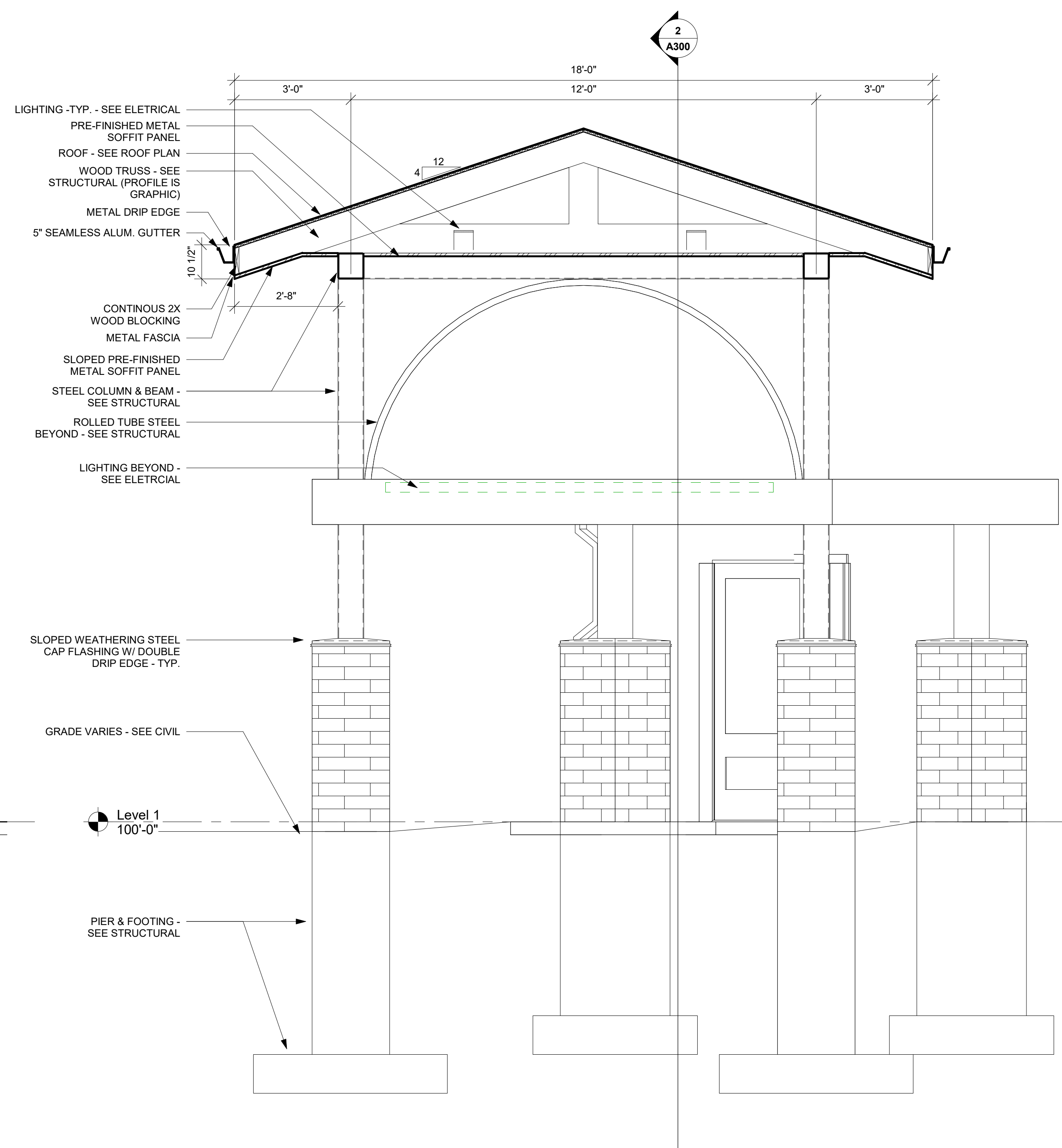
Graphic Scale: VARIES

Last Update: 2/7/2023 9:52:11 AM

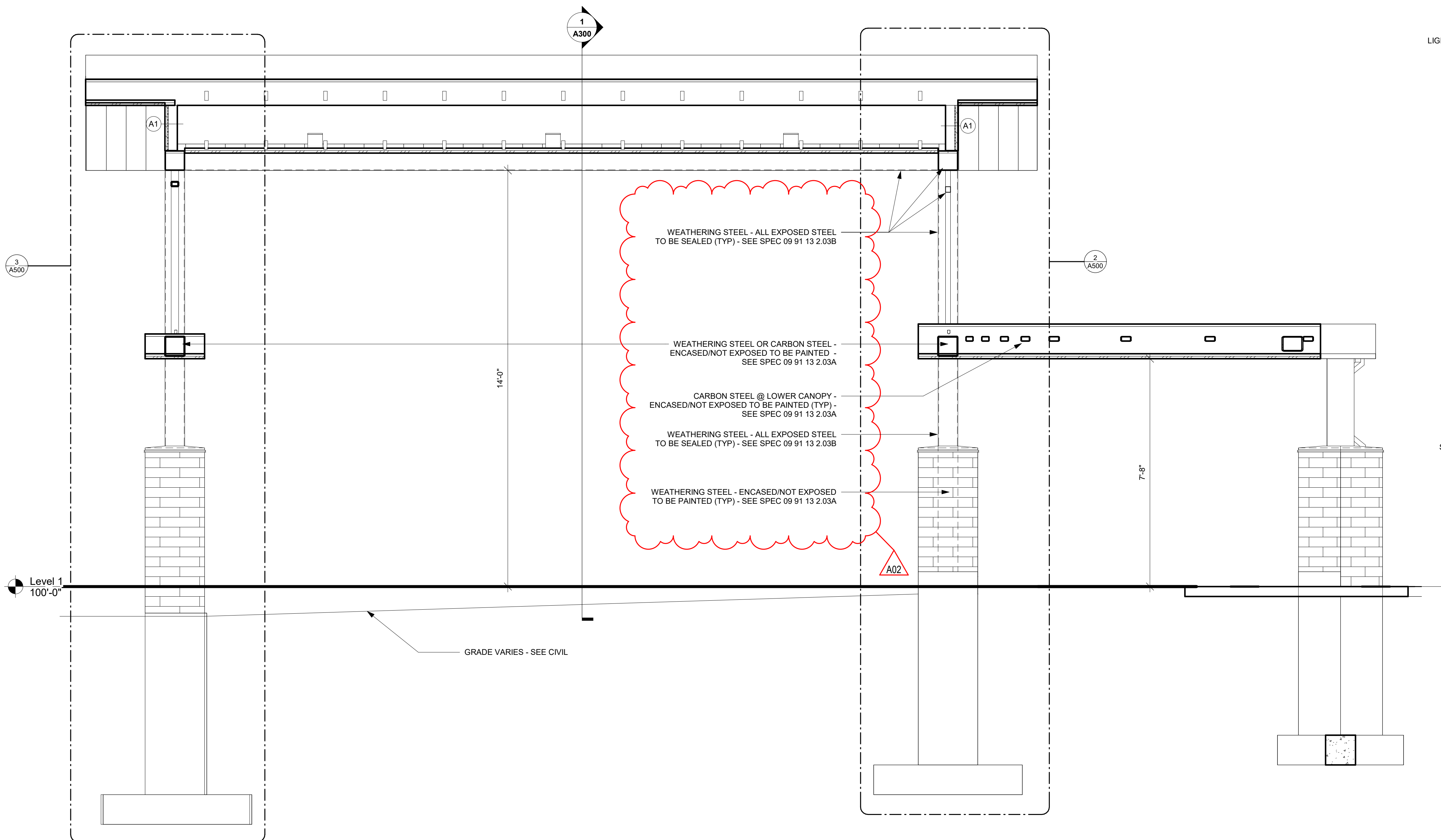
A300



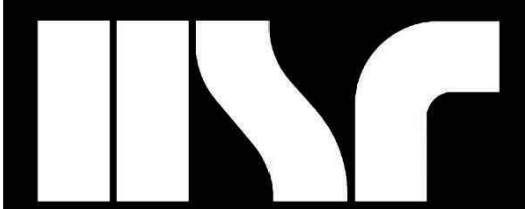
3 LOWER CANOPY SECTION
1/2" = 1'-0"



1 UPPER CANOPY SECTION
1/2" = 1'-0"



2 MAIN CANOPY SECTION
1/2" = 1'-0"



HSR ASSOCIATES INC.
100 MILWAUKEE STREET
LA CROSSE, WISCONSIN
PHONE: 608.784.1830
FAX: 608.782.5844
www.hsrassociates.com

Consultant:

PARAGON ASSOCIATES
Environmental Design & Consulting
CIVIL ENGINEERING - LANDSCAPE ARCHITECTURE - SURVEYING
632 COPPLELAND AVENUE - LA CROSSE, WI 54601
Tel: 608.781.3110 Fax: 608.781.3197 Paragon-Assoy.biz

Project Title: **EAGLE CREST COMMUNITIES
CASS STREET ASSISTED LIVING CANOPY & PARKING**

Project Location: **1315 CASS STREET
LA CROSSE, WI 54601**

Sheet Title: **SITE PLAN**

HSR Project Number: **22081**

Project Date: **JANUARY, 27 2023**

Drawn By: **C.M.G.**

Key Plan:

No.	Description	Date
A02	ADDENDUM #2	02/08/2023

Graphic Scale: **1" = 10'**

Last Update: **02/07/23**

C100

- C100 GENERAL NOTES**
- THE LOCATION OF EXISTING UTILITIES, BOTH UNDERGROUND AND OVERHEAD ARE APPROXIMATE ONLY, AND HAVE NOT BEEN INDEPENDENTLY VERIFIED BY THE OWNER OR ITS REPRESENTATIVES. THE CONTRACTOR SHALL BE RESPONSIBLE FOR DETERMINING THE EXACT LOCATION OF ALL EXISTING UTILITIES, WHETHER SHOWN ON THESE PLANS OR NOT, BEFORE COMMENCING WORK, AND SHALL BE FULLY RESPONSIBLE FOR ANY AND ALL DAMAGES WHICH MIGHT BE CAUSED BY THE CONTRACTORS FAILURE TO EXACTLY LOCATE AND PRESERVE ANY AND ALL UTILITIES. CALL DIGGERS HOTLINE (800) 242-8511
 - THE UNDERGROUND LOCATIONS OF THE PUBLIC UTILITIES WERE MARKED BY REPRESENTATIVES OF THOSE COMPANIES. THE LOCATIONS OF THE PRIVATELY OWNED UNDERGROUND UTILITIES WERE NOT MARKED.
 - THERE MAY BE MORE UNDERGROUND UTILITY INSTALLATIONS WITHIN THE PROJECT AREA THAT ARE NOT SHOWN.
 - IT SHALL BE THE CONTRACTORS RESPONSIBILITY TO ARRANGE FOR ANY NECESSARY INSPECTIONS BY LOCAL GOVERNMENT THAT MAY BE REQUIRED.
 - ALL DIMENSIONS ON CURBS ARE TO FLOW LINES UNLESS NOTED OTHERWISE.
 - ALL DIMENSIONS ON BIOFILTERS ARE TO INSIDE EDGE OF LANDSCAPING UNLESS NOTED OTHERWISE.

- C100 HEX NOTE KEY**
- 1. INSTALL LIGHT DUTY ASPHALT PAVEMENT. SEE DETAIL 101
 - 2. INSTALL CONCRETE PAVEMENT. SEE DETAIL 102
 - 3. INSTALL STANDARD 24" CURB AND GUTTER. SEE DETAIL 103
 - 4. INSTALL STANDARD 24" CURB AND GUTTER - REVERSE SLOPE. SEE DETAIL 104
 - 5. INSTALL 2' END SECTION CURB AND GUTTER. SEE DETAIL 105
 - 6. INSTALL INTEGRAL CURB/SIDEWALK. SEE DETAIL 106
 - 7. INSTALL CONCRETE SIDEWALK. SEE DETAIL 107
 - 8. INSTALL PARALLEL SIDEWALK RAMP. SEE DETAIL 108
 - 9. INSTALL SIDEWALK RAMP. SEE DETAIL 109
 - 10. INSTALL CONCRETE DRIVEWAY APRON. SEE DETAIL 110
 - 11. INSTALL DISABLED PARKING SIGN. SEE DETAIL 111
 - 12. INSTALL CURB CUT. SEE DETAIL 112
 - 13. INSTALL SPLASH PAD. SEE DETAIL 113
 - 14. REPLACE SIDEWALK, CURB & GUTTER, AND ASPHALT PAVEMENT TO CITY OF LA CROSSE STANDARDS.
 - 15. INSTALL REINFORCED CONCRETE STEP. SEE DETAIL 114
 - 16. RELOCATED LIGHT FIXTURE - SEE ELECTRICAL.
 - 17. INSTALL FENCING TO MATCH FENCING ON EAST SIDE. SEE DETAIL 115
 - 18. INSTALL CONCRETE WHEEL STOPS

- BID ALTERNATE NOTES**
- BID ALTERNATE 1: ALL PAVEMENT IN EAST PARKING LOT TO BE CONCRETE. SEE DETAIL 102
- BID ALTERNATE 2A: REPLACE PAVEMENT AND APRON IN WEST PARKING LOT AND INSTALL ALL IMPROVEMENTS SHOWN IN DASHED "BID ALTERNATE 2A" AREAS.
- BID ALTERNATE 2B: ALL PAVEMENT IN WEST PARKING LOT TO BE CONCRETE. SEE DETAIL 102

